

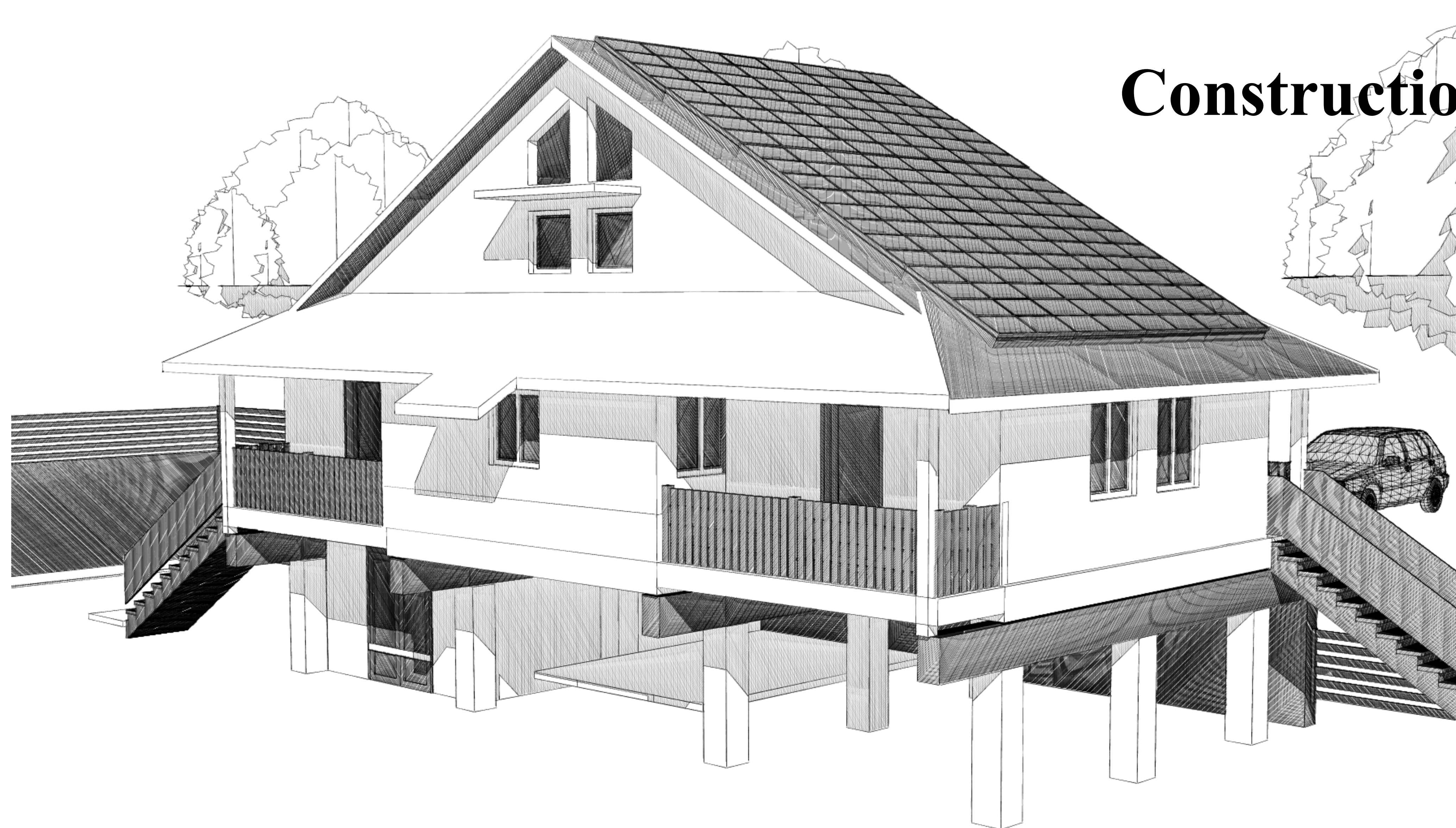
FSU Zero Emission House

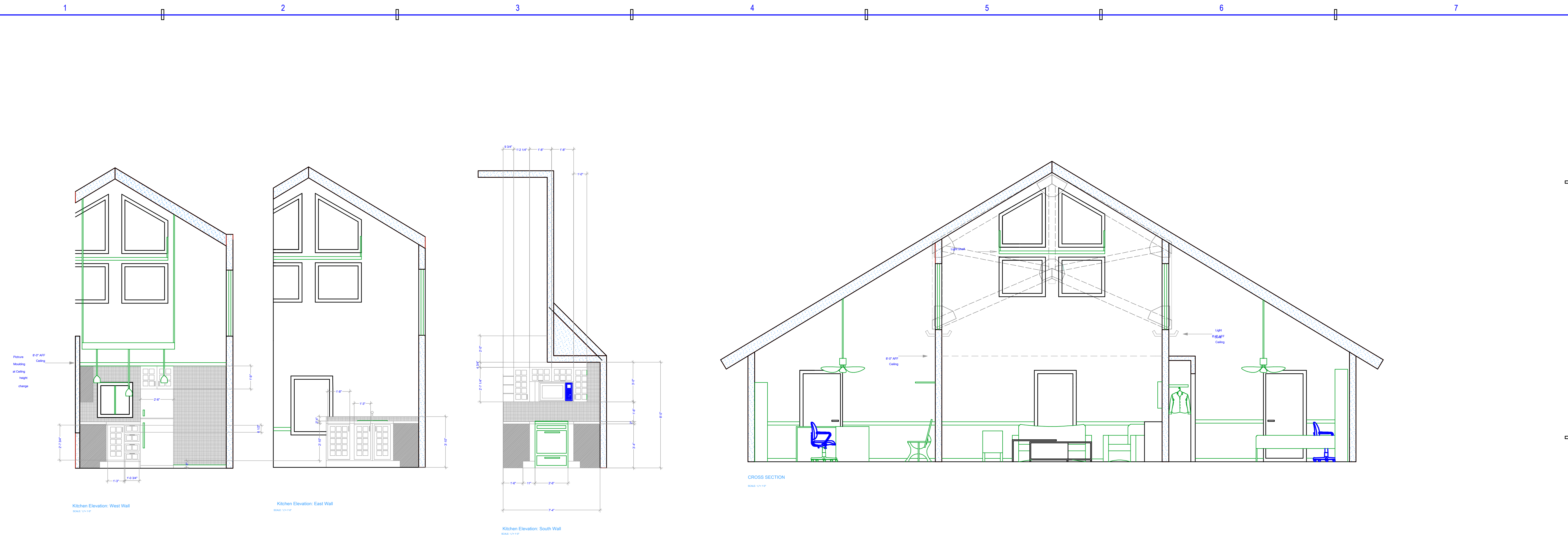
SESEC

Sustainable Energy and Engineering Center
Florida State University

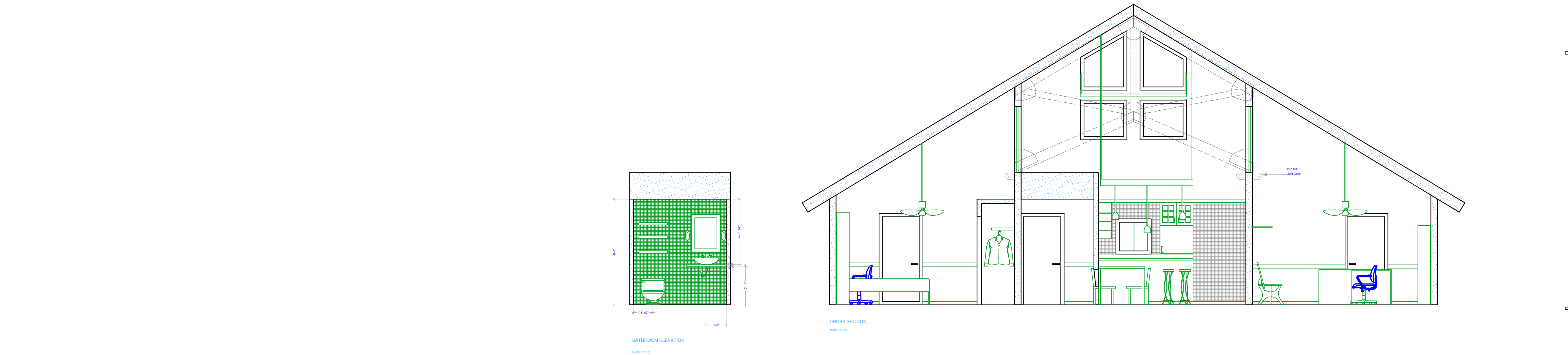
Construction Documents

May 04, 2007





2 INTERIOR elevation
A6.1 1/4" = 1'-0"



1 INTERIOR elevation
A6.1 1/4" = 1'-0"

THESE DRAWINGS AND RENDERINGS ARE INSTRUMENTS OF SERVICE. THE DRAWINGS AND COPIES THEREOF, INCLUDING ELECTRONIC MEDIA AND CAD FILES, ARE THE PROPERTY OF GILCHRIST AND CROWE, ARCHITECTS, P.A. THEIR USE, REPRESENTATION OR REPRODUCTION IN ACTUAL OR CONTENT BY ANY ENTITY THAT POSSESSES THEM FOR ANY PURPOSE EXCEPT BY WRITTEN AGREEMENT WITH THE ARCHITECT IS PROHIBITED. THIS COPYRIGHT NOTIFICATION SHALL BE TRUE AS IF DIRECTLY PLACED ON EACH DRAWING EXHIBIT OR RENDERING ON THIS DOCUMENT AND SHALL NOT BE REMOVED FROM THESE DOCUMENTS.

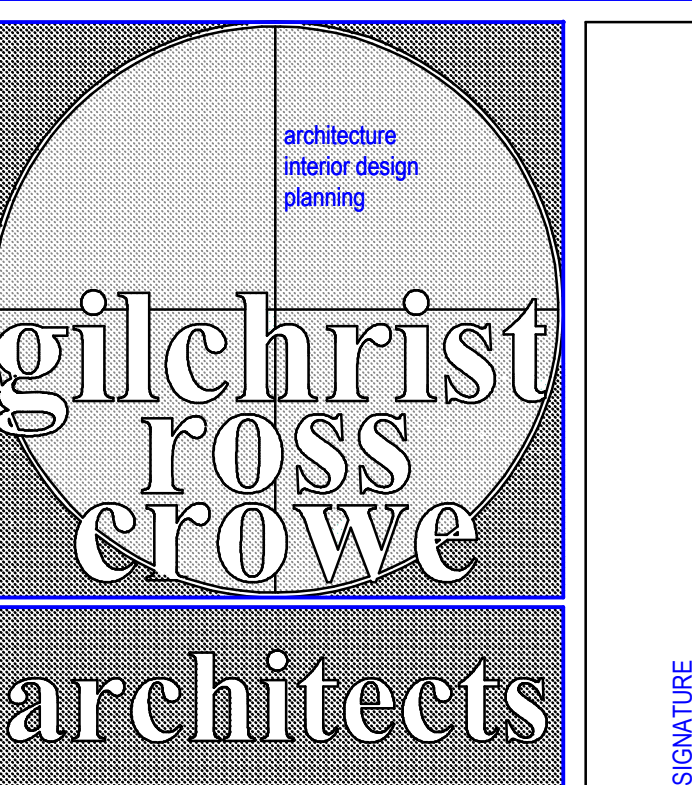
Consultants:

PHASE:	DRAWN BY:	REVIEWED BY:	DATE:
CONCEPT SCHEMATICS			
ADVANCED SCHEMATICS			
DESIGN DEVELOPMENT	CDR	CDR	11-3-06
50% CONSTR. DOCUMENTS	CDR	CDR	12-19-06
100% CONSTR. DOCUMENTS	JR	CDR	3-22-07
CONTRACT DOCUMENTS			
REVISION 1			
REVISION 2			
REVISION 3			

**FSU
Zero Emission
House**

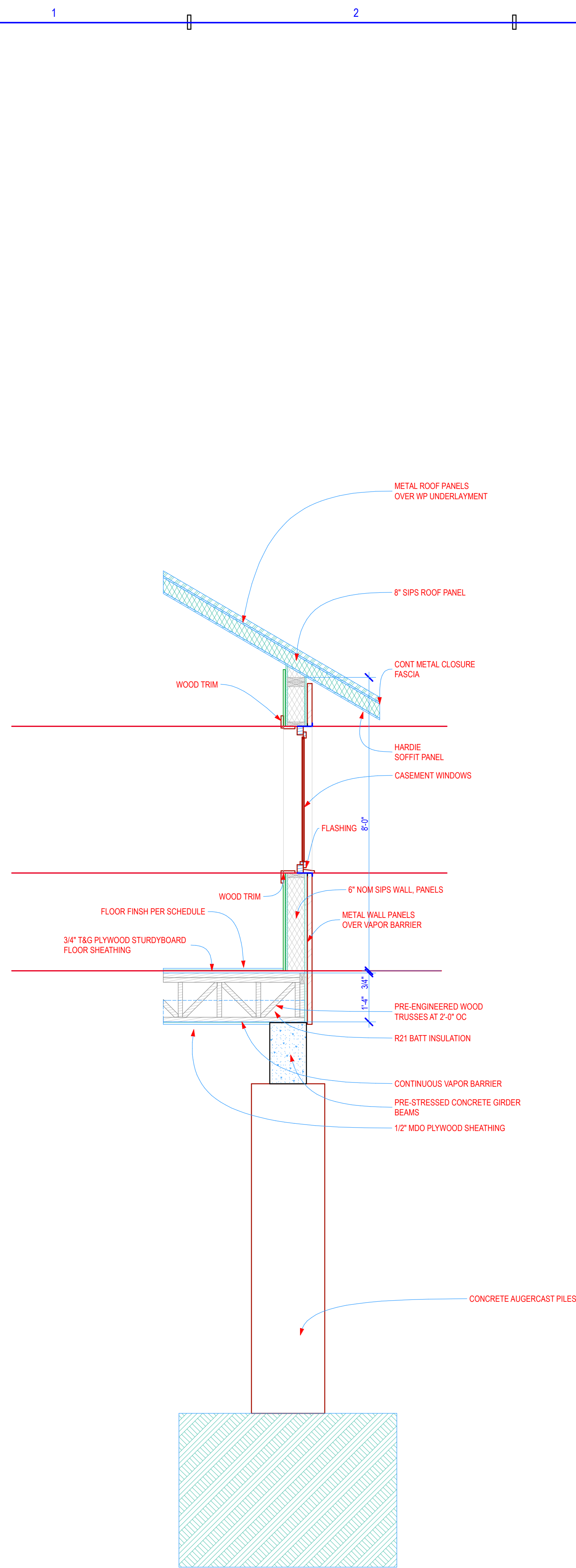
Florida State University
SESEC

GRC Project Number 06160

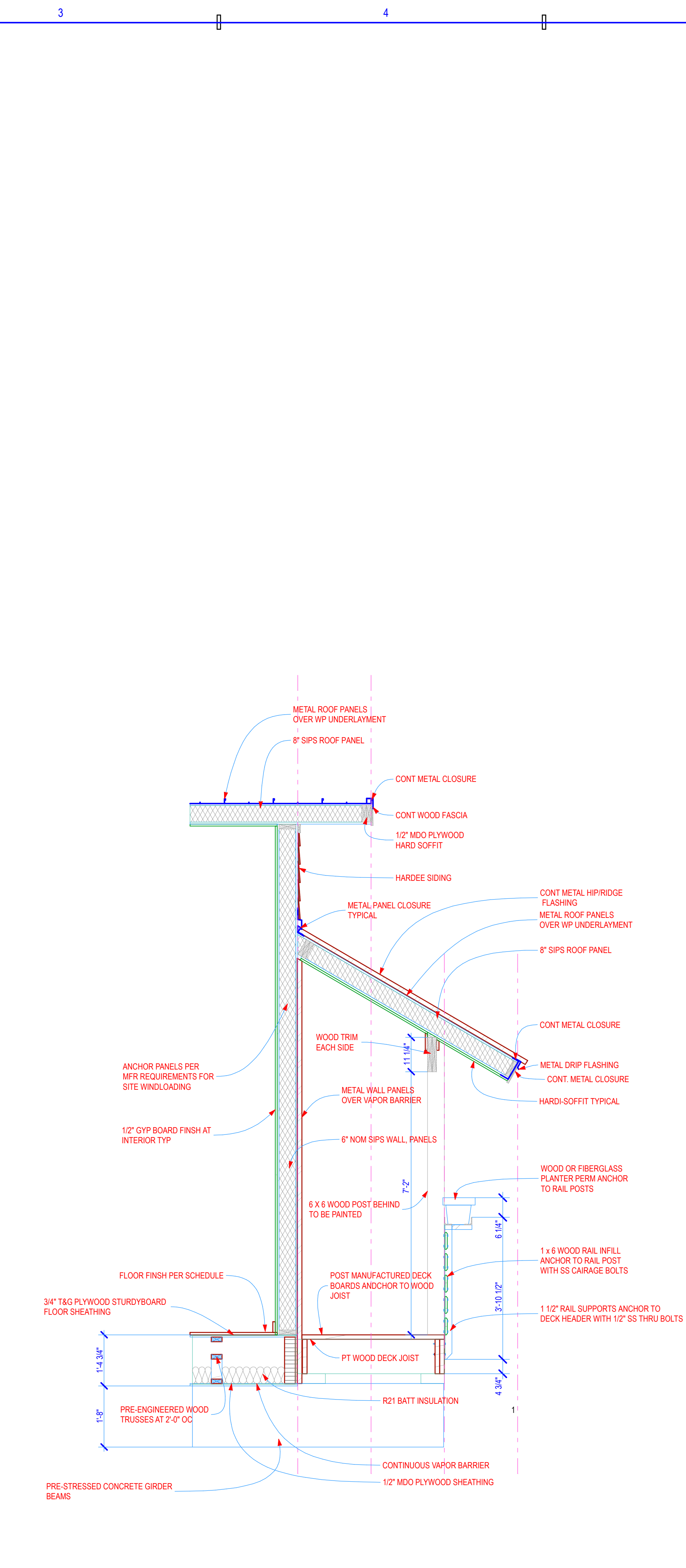


749 WEST PENSACOLA STREET TALLAHASSEE, FLORIDA 32304
(850) 222-8100 FAX (850) 681-9149 www.architects-gca.com

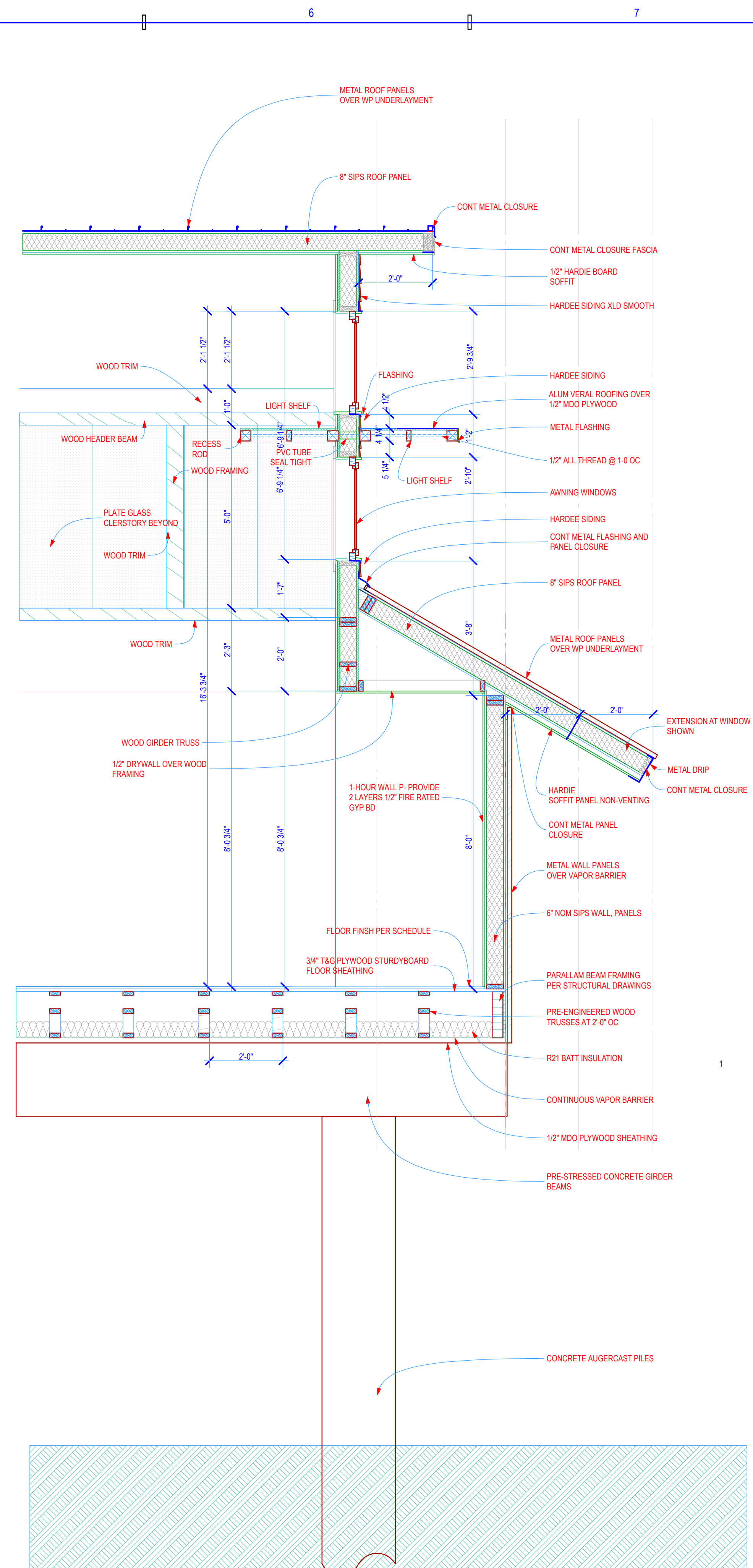
DESCRIPTION	A6.1
Interiors	



3 Wall Section 4 (Autorebuild Model)
A5.1 1/2" = 1'-0"



1 Wall Section (Drawing)
A5.1 1/2" = 1'-0"



2 Wall Section 2 (Autorebuild Model)
A5.1 1/2" = 1'-0"

THESE DRAWINGS AND RENDERINGS ARE INSTRUMENTS OF SERVICE. THE DRAWINGS AND COPIES THEREOF, INCLUDING ELECTRONIC MEDIA AND CAD FILES, ARE THE PROPERTY OF GILCHRIST AND CROWE, ARCHITECTS, P.A. THEIR USE, REPRESENTATION OR REPRODUCTION IN ACTUAL OR CONTENT BY ANY ENTITY THAT POSSESSES THEM FOR ANY PURPOSE EXCEPT BY WRITTEN AGREEMENT WITH THE ARCHITECT IS PROHIBITED. THIS COPYRIGHT NOTIFICATION SHALL BE TRUE AS IF DIRECTLY PLACED ON EACH DRAWING EXHIBIT OR RENDERING ON THIS DOCUMENT AND SHALL NOT BE REMOVED FROM THESE DOCUMENTS.

Consultants:

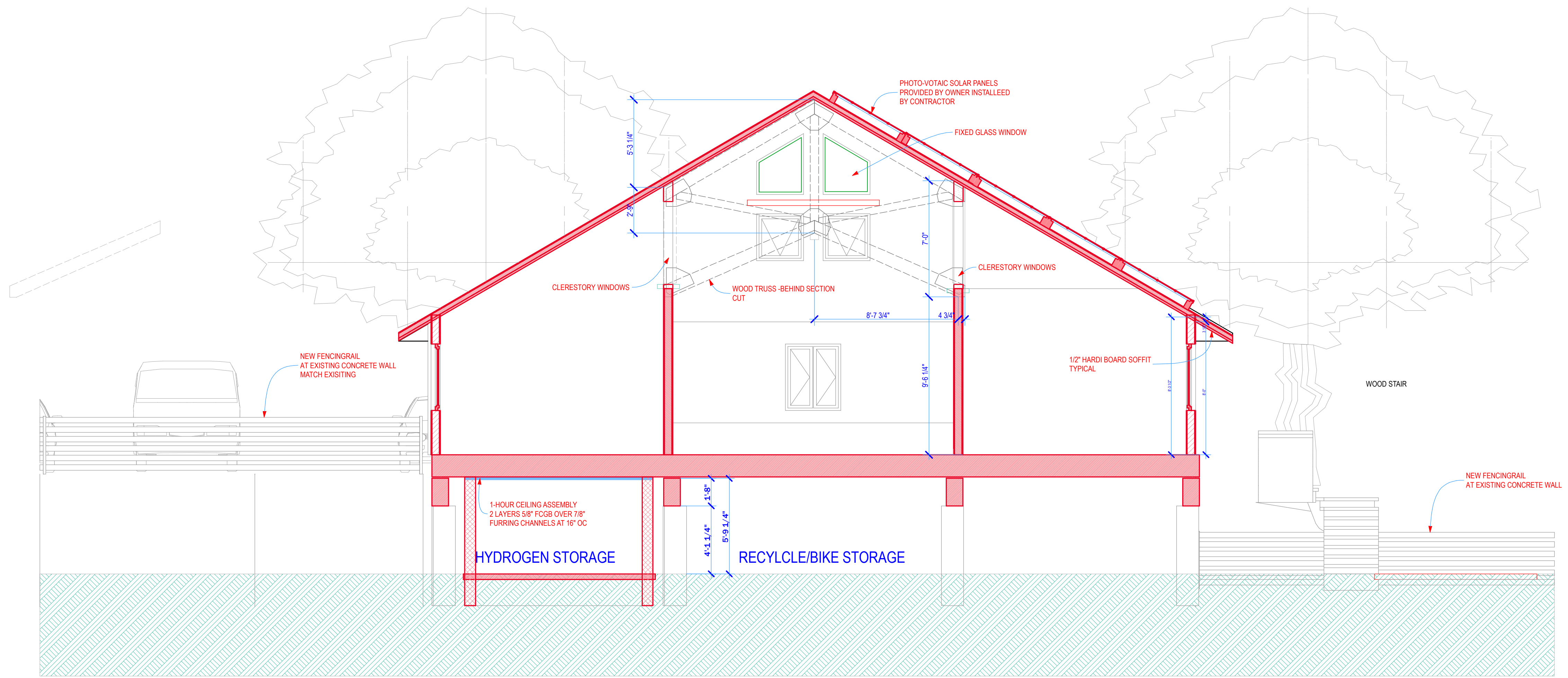
PHASE:	DRAWN BY:	REVIEWED BY:	DATE:
CONCEPT SCHEMATICS			
ADVANCED SCHEMATICS			
DESIGN DEVELOPMENT	CDR	CDR	11-3-06
50% CONSTR. DOCUMENTS	CDR	CDR	12-19-06
100% CONSTR. DOCUMENTS	JR	CDR	3-22-07
CONTRACT DOCUMENTS			
REVISION 1			
REVISION 2			
REVISION 3			

FSU Zero Emission House
Florida State University SESEC
GRC Project Number 06160

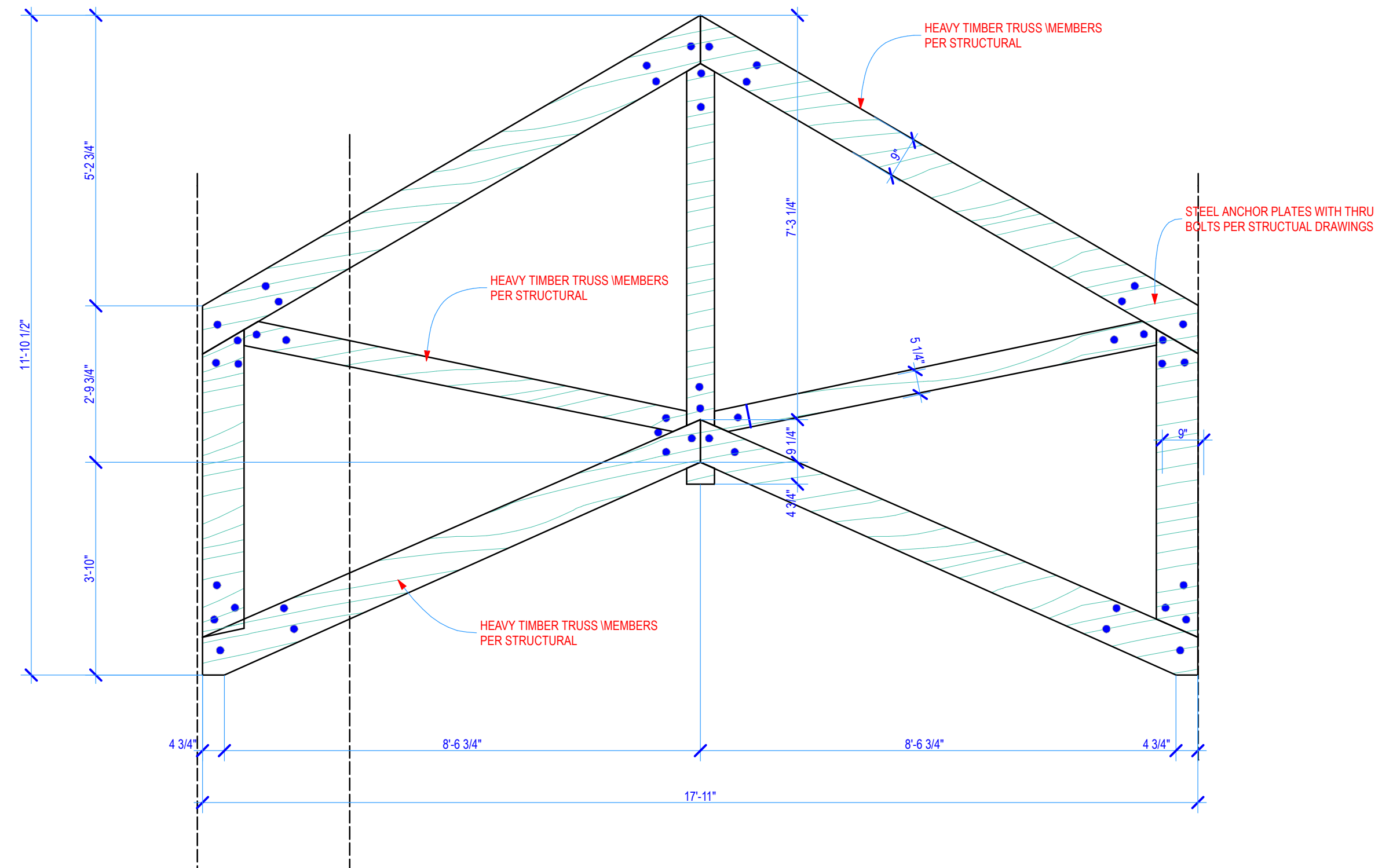


749 WEST PENINSACOLA STREET TALLAHASSEE, FLORIDA 32304
(850) 222-8100 FAX (850) 681-9149 www.architects-gca.com

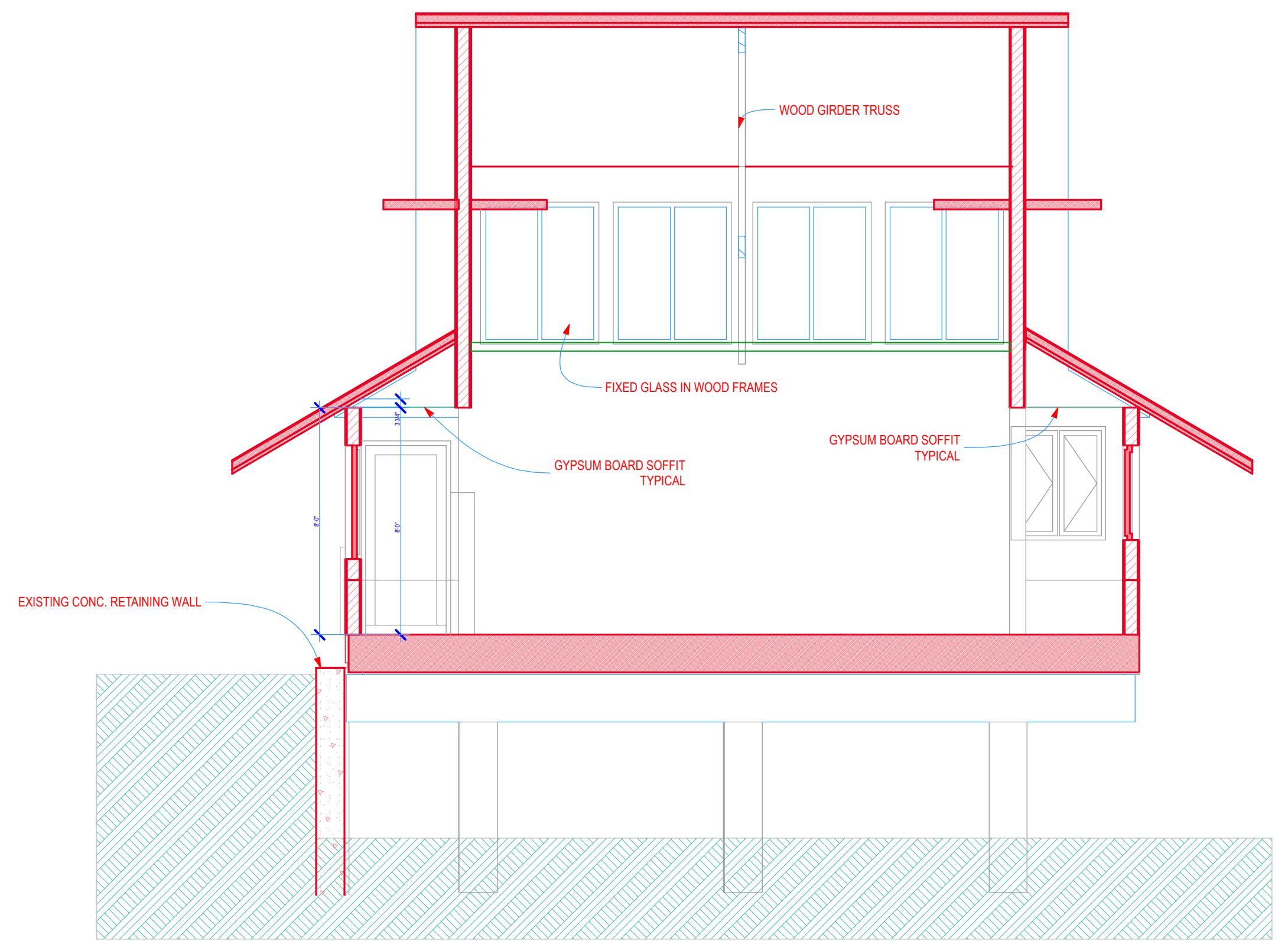
DESCRIPTION	A5.1
Wall Sections	



2 Longitudinal Section (Autorebuild Model)
 A4.2 1/4" = 1'-0"



3 wood truss elevation
 A4.2 1/2" = 1'-0"



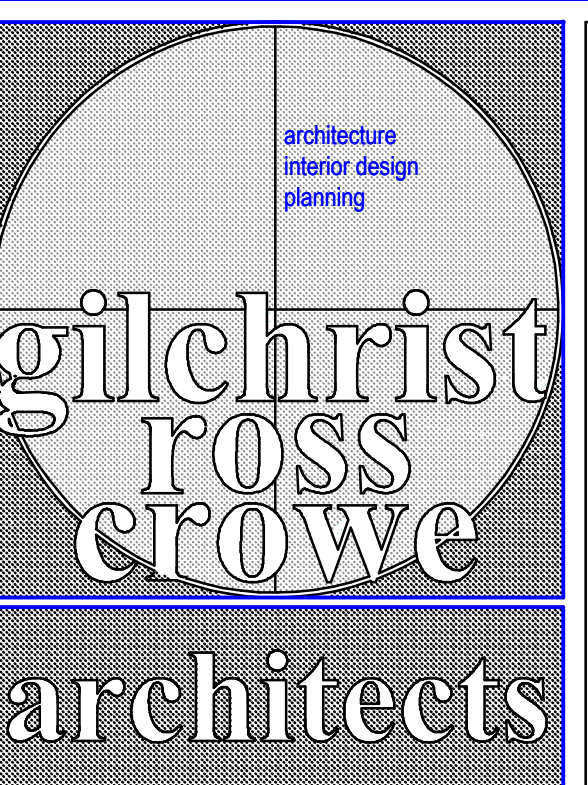
1 Cross Section (Autorebuild Model)
 A4.2 1/4" = 1'-0"

THESE DRAWINGS AND RENDERINGS ARE INSTRUMENTS OF SERVICE. THE DRAWINGS AND COPIES THEREOF, INCLUDING ELECTRONIC MEDIA AND CAD FILES, ARE THE PROPERTY OF GILCHRIST AND CROWE, ARCHITECTS, P.A. THEIR USE, REPRESENTATION OR REPRODUCTION IN ACTUAL OR CONTENT BY ANY ENTITY THAT POSSESSES THEM FOR ANY PURPOSE EXCEPT BY WRITTEN AGREEMENT WITH THE ARCHITECT IS PROHIBITED. THIS COPYRIGHT NOTIFICATION SHALL BE TRUE AS IF DIRECTLY PLACED ON EACH DRAWING EXHIBIT OR RENDERING ON THIS DOCUMENT AND SHALL NOT BE REMOVED FROM THESE DOCUMENTS.

Consultants:

PHASE:	DRAWN BY:	REVIEWED BY:	DATE:
CONCEPT SCHEMATICS			
ADVANCED SCHEMATICS			
DESIGN DEVELOPMENT	CDR	CDR	11-3-06
50% CONSTR. DOCUMENTS	CDR	CDR	12-19-06
100% CONSTR. DOCUMENTS	JR	CDR	3-22-07
CONTRACT DOCUMENTS			
REVISION 1			
REVISION 2			
REVISION 3			

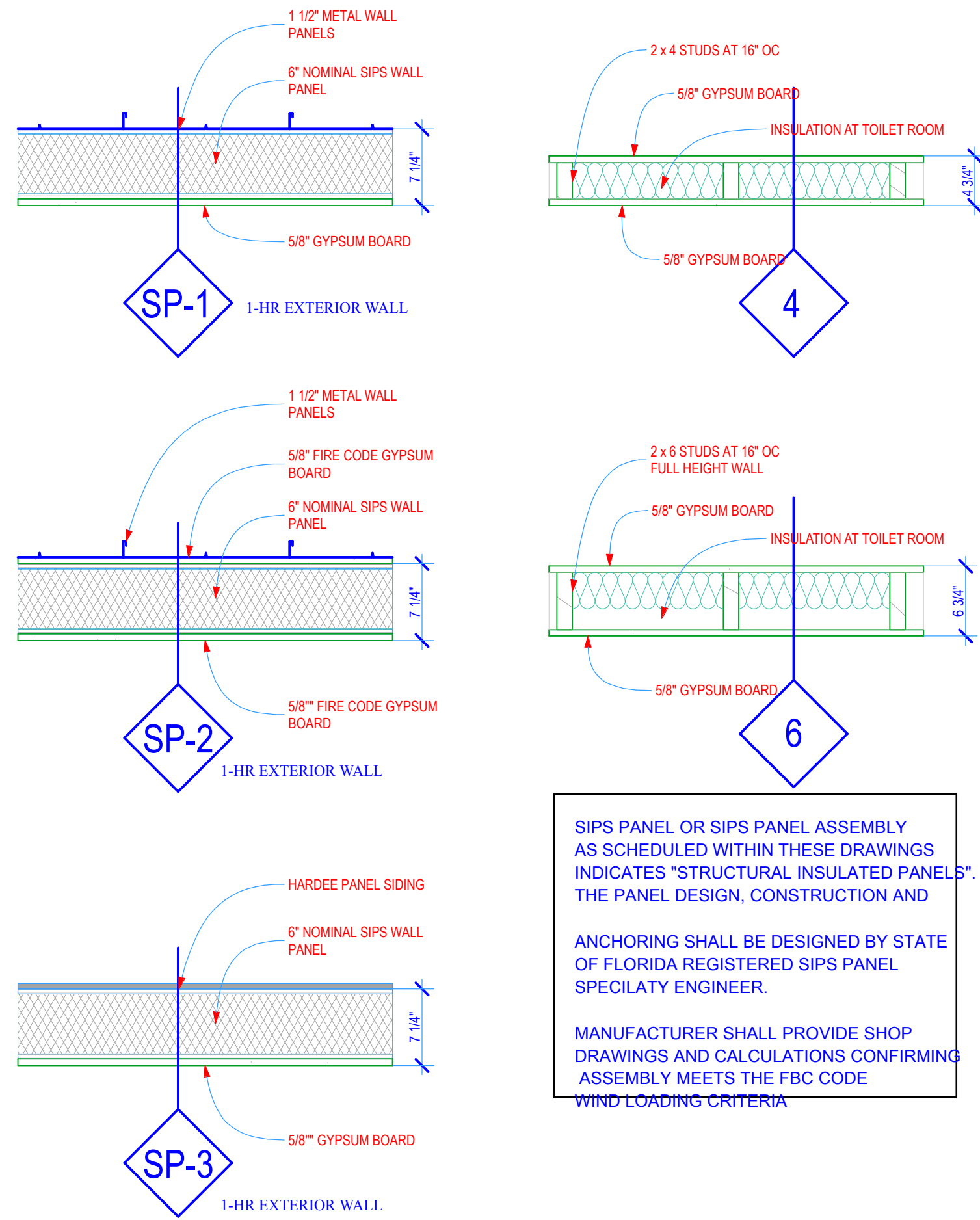
FSU
Zero Emission House
 Florida State University
SESEC
 GRC Project Number 06160



749 WEST PENSACOLA STREET TALLAHASSEE, FLORIDA 32304
 (850) 222-8100 FAX (850) 681-9149 www.architects-gca.com

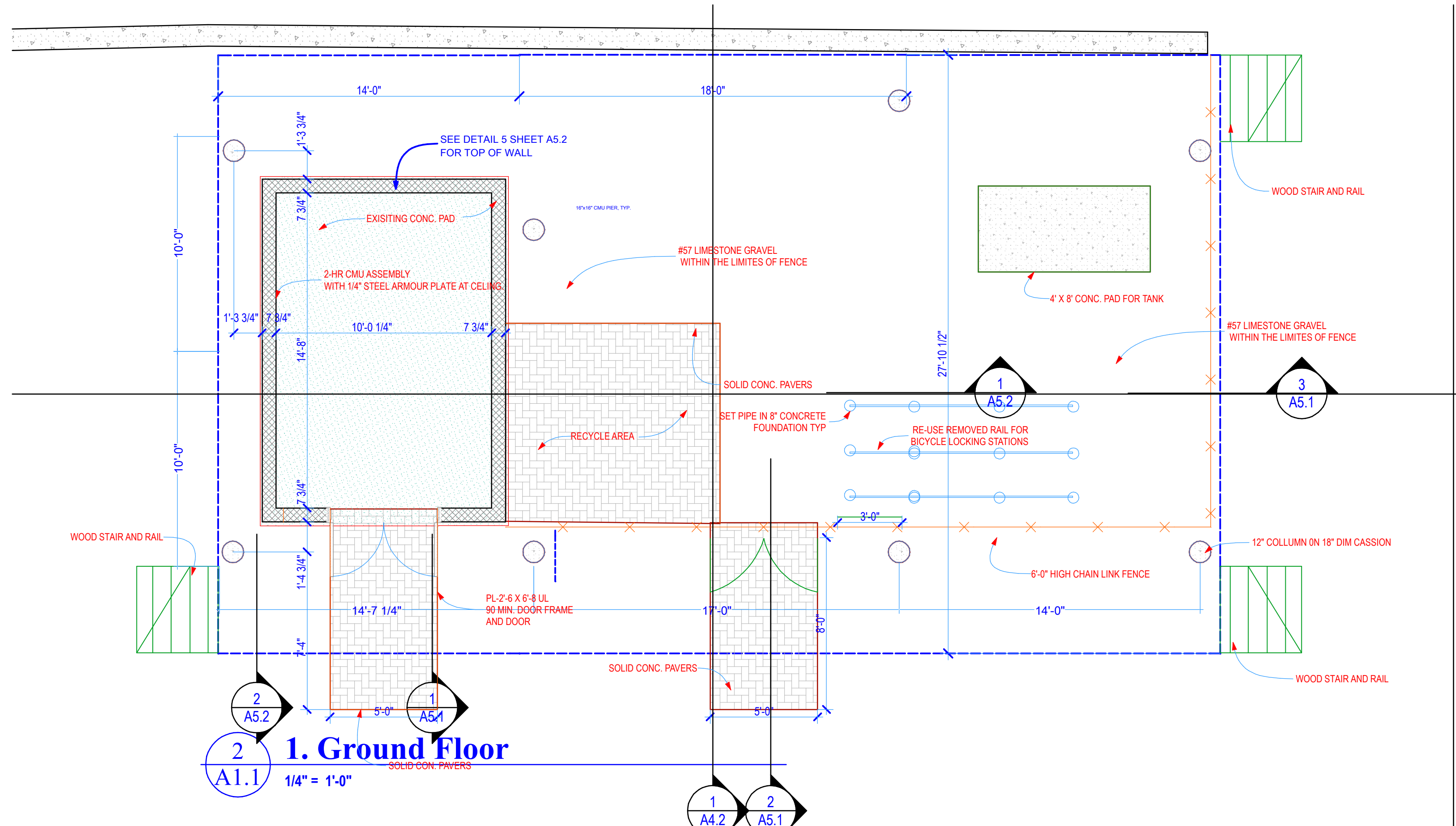
DESCRIPTION	A4.2
Bldg Sections	

WALL LEGEND

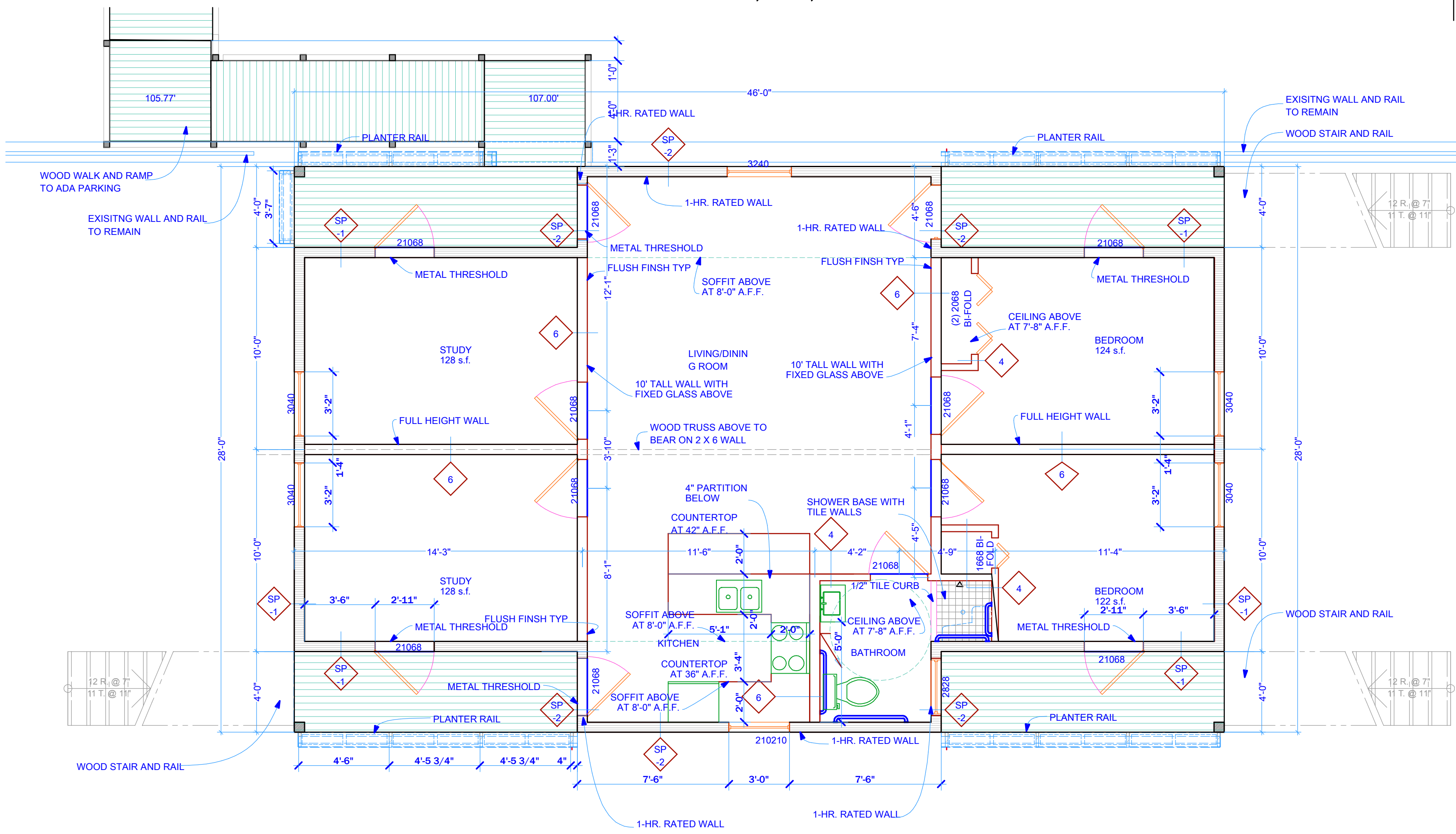


SIPS PANEL OR SIPS PANEL ASSEMBLY AS SCHEDULED WITHIN THESE DRAWINGS INDICATES "STRUCTURAL INSULATED PANELS". THE PANEL DESIGN, CONSTRUCTION AND ANCHORING SHALL BE DESIGNED BY STATE OF FLORIDA REGISTERED SIPS PANEL SPECIALTY ENGINEER. MANUFACTURER SHALL PROVIDE SHOP DRAWINGS AND CALCULATIONS CONFIRMING ASSEMBLY MEETS THE FBC CODE WIND LOADING CRITERIA

3 Wall Types typical
1" = 1'-0"



1. Ground Floor
1/4" = 1'-0"



3. First Floor
1/4" = 1'-0"

THESE DRAWINGS AND RENDERINGS ARE INSTRUMENTS OF SERVICE. THE DRAWINGS AND COPIES THEREOF, INCLUDING ELECTRONIC MEDIA AND CAD FILES, ARE THE PROPERTY OF GILCHRIST AND CROWE, ARCHITECTS, P.A. THEIR USE, REPRESENTATION OR REPRODUCTION IN ACTUAL OR CONTENT BY ANY ENTITY THAT POSSESSES THEM FOR ANY PURPOSE EXCEPT BY WRITTEN AGREEMENT WITH THE ARCHITECT IS PROHIBITED. THIS COPYRIGHT NOTIFICATION SHALL BE TRUE AS IF DIRECTLY PLACED ON EACH DRAWING EXHIBIT OR RENDERING ON THIS DOCUMENT AND SHALL NOT BE REMOVED FROM THESE DOCUMENTS.

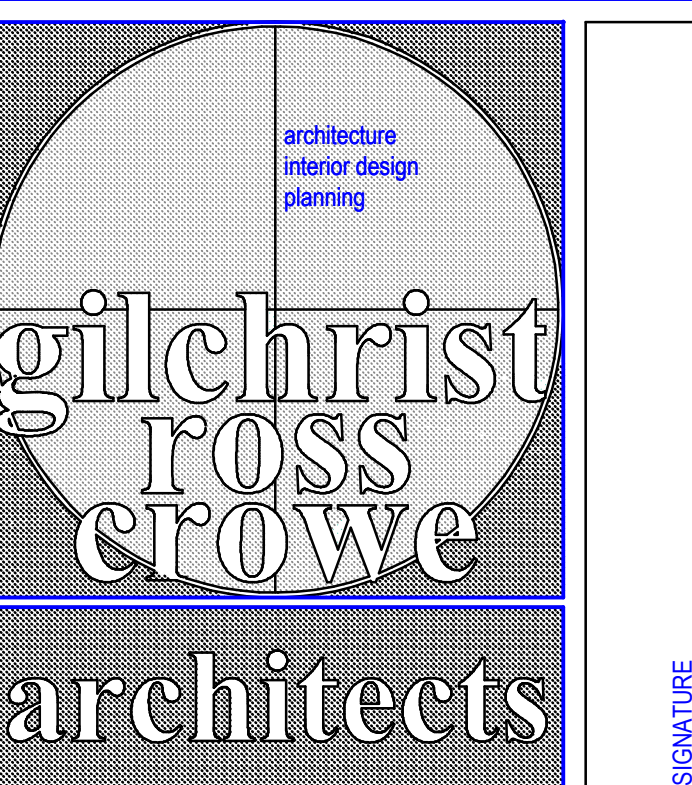
Consultants:

PHASE:	DRAWN BY:	REVIEWED BY:	DATE:
CONCEPT SCHEMATICS			
ADVANCED SCHEMATICS			
DESIGN DEVELOPMENT	CDR	CDR	11-3-06
50% CONSTR. DOCUMENTS	CDR	CDR	12-19-06
100% CONSTR. DOCUMENTS	JR	CDR	3-22-07
CONTRACT DOCUMENTS			
REVISION 1			
REVISION 2			
REVISION 3			

FSU
Zero Emission
House

Florida State University
SESEC

GRC Project Number 06160



749 WEST PENINSACOLA STREET TALLAHASSEE, FLORIDA 32304
(850) 222-8100 FAX (850) 681-9149 www.architects-gca.com

DESCRIPTION

Floor Plan

A1.1